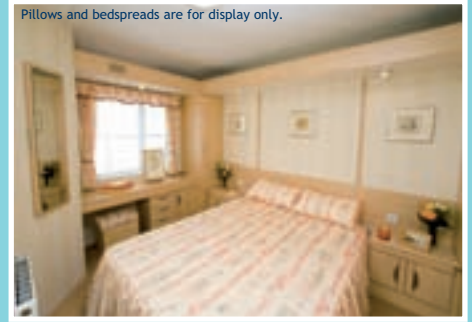


Microwave is an optional extra.



Pillows and bedspreads are for display only.

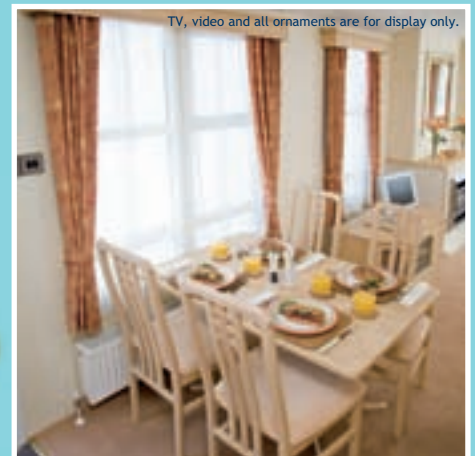


# Heritage Super

All ornaments are for display only.



Model illustrated is the Heritage Super 37/2 bedroom with optional central heating.



TV, video and all ornaments are for display only.

[www.atlas-caravans.co.uk](http://www.atlas-caravans.co.uk)

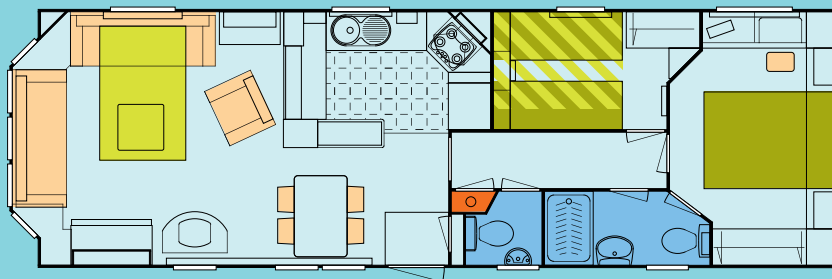
# Heritage Super



## Features

- Pitched roof
- Open vaulted ceiling
- Plastisol coated steel pantile roof
- Under floor insulation
- Lagged water pipes
- Embossed six panel, woodgrain effect, flush internal doors
- High quality lounge seating with fold out sprung double bed
- Coordinating scatter cushions
- Contemporary styled cabinetwork with decorative glazed panels
- Modern gas fire with stylish surround
- Net curtains to lounge area and bedrooms
- T.V. turntable
- T.V. point
- Freestanding dining table and upholstered chairs
- Venetian blind to kitchen and shower room
- Modern, stylish hob and high level oven and grill
- Stainless steel recirculating cooker hood
- 18/8 quality, double radius, linen finish, stainless steel sink
- Integrated fridge with freezer compartment
- Deluxe metal drawer system
- Ample storage space for household items
- Fully lined curtains to bedrooms
- Interior sprung mattresses
- Metal freestanding sprung beds in main and twin bedrooms
- Framed picture(s) to main bedroom
- Twin beds combine to make a double bed if required
- Under bed storage in all bedrooms
- High quality ceramic toilet suite
- Shower cubicle with sliding glazed doors and thermostatic shower mixer
- Coordinating doormat
- Exterior light
- Colour coordinated downpipes
- Retractable towbar
- Aluminium cladding
- Smoke alarm
- Fire extinguisher

## Layouts - 12 Wide

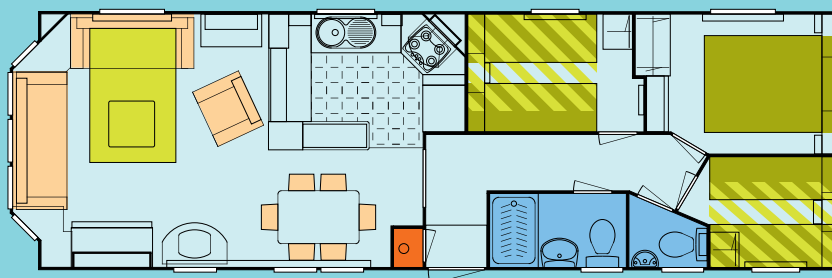


37/2 Bedroom

6 Berth

Body Length (inc. bay) - 11.80m (38'-8 1/2")

Body Width - 3.69m (12'-1")

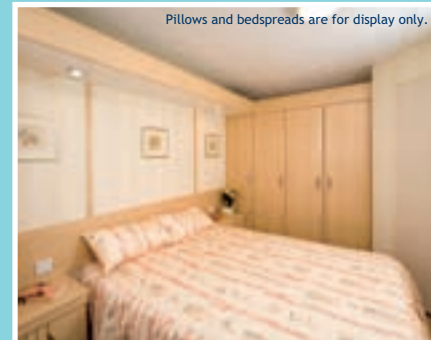


37/3 Bedroom

8 Berth

Body Length (inc. bay) - 11.80m (38'-8 1/2")

Body Width - 3.69m (12'-1")



## Options for:

- Domestic style central heating system including combi boiler
- Double glazed PVCu exterior door and windows, featuring night ventilation position
- Extra insulation
- Atlas intelligent electric heating system
- Side-by-side stainless steel fridge and freezer

Atlas reserves the right to change any materials, fittings etc., shown in this brochure at any time and without prior notice as supply or product development demand. All Atlas Caravan Holiday Homes are built to comply with all relevant British Standards and Codes of Practice as required by the National Caravan Council certification scheme. NOTE: Caravan Holiday Homes are not designed for residential occupancy. "To use an Atlas Caravan Holiday Home, it will need to be correctly sited, have steps or other means of entry and be connected to services (an appropriate propane gas supply, mains electricity to suit the required power offtake, mains water at a pressure to suit the appliances and a waste water/sewage outlet)". Due to the nature of our construction methods and practices, it may not always be possible to match patterns precisely on some wallboards and fabrics. Any Park Operator, anywhere in the UK, can purchase an Atlas Holiday Home for you through the Atlas Dealer/Park Distribution network.



Atlas Caravan Company Ltd.

Wiltshire Road, Hull HU4 6PD.

Telephone No. 01482 562101. Fax No. 01482 566033.

www.atlas-caravans.co.uk



APPROVED CONTRACTOR