



Pillows and bedspreads are for display only.

Lakeland & Lakeland Super

T.V., Video and all ornaments are for display only.



Model illustrated is the Lakeland Super 35/2 bedroom with optional central heating.



www.atlas-caravans.co.uk

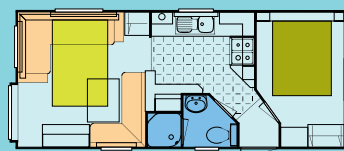
Lakeland & Lakeland Super



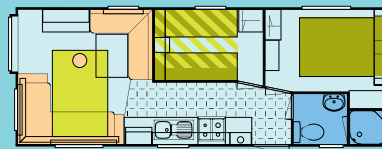
Features

- Pitched roof
- Open vaulted ceiling
- Plastisol coated steel pantile roof
- Under floor insulation
- Lagged water pipes
- Woodgrain effect, flush internal doors
- Full height windows to lounge
- High quality lounge seating with foldout sprung double bed
- Modern gas fire with stylish surround
- Fully lined curtains to lounge
- Net curtains to lounge area and bedrooms
- T.V. point
- Elegant dinette style dining area
- Venetian blind to kitchen and shower room
- 600 wide oven with electronic ignition incorporating grill
- 18/8 quality, linen finish, stainless steel sink
- Space provided for a fridge of your choice
- Deluxe metal drawer system
- Ample storage space for household items
- Framed picture to main bedroom (selected models)
- Interior sprung mattresses with damask ticking
- Metal freestanding sprung beds to main and twin bedrooms
- Twin beds combine to make a double bed if required
- Under bed storage in all bedrooms
- High quality ceramic toilet suite
- Shower cubicle with full width or sliding glazed doors (layout dependent) and thermostatic shower mixer
- Retractable towbar
- Aluminium cladding
- Smoke alarm
- Fire extinguisher

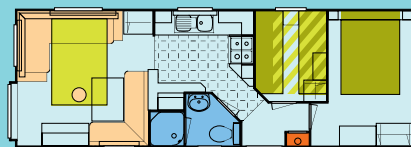
Layouts - 10 Wide



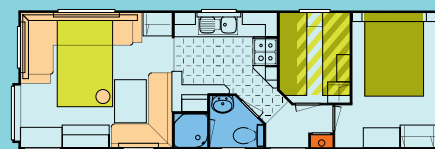
23/1 Bedroom 4 Berth
Body Length - 7.29m (23'-11")
Body Width - 3.07m (10'-1")



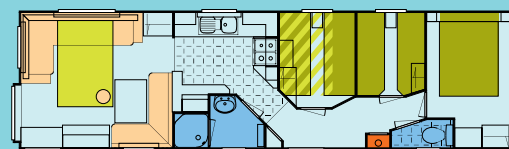
26/2 Bedroom 6 Berth
Body Length - 8.15m (26'-9")
Body Width - 3.07m (10'-1")



28/2 Bedroom 6 Berth
Body Length - 8.81m (28'-10 3/4")
Body Width - 3.07m (10'-1")

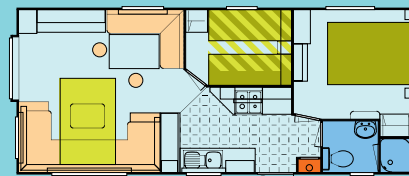


30/2 Bedroom 6 Berth
Body Length - 9.26m (30'-4 1/2")
Body Width - 3.07m (10'-1")

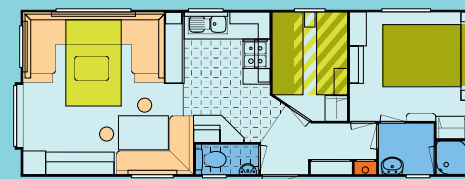


35/3 Bedroom 8 Berth
Body Length - 10.90m (35'-9")
Body Width - 3.07m (10'-1")

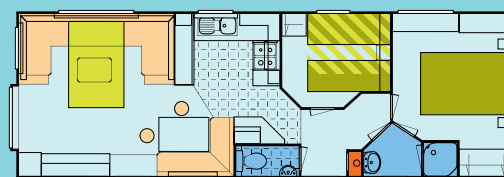
Layouts - 12 Wide



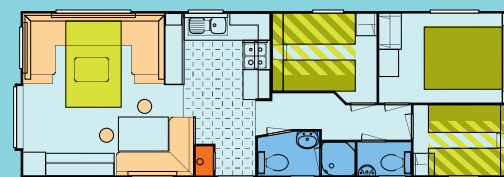
28/2 Bedroom 6 Berth
Body Length - 8.81m (28'-10 3/4")
Body Width - 3.69m (12'-1")



32/2 Bedroom 6 Berth
Body Length - 9.95m (32'-7 3/4")
Body Width - 3.69m (12'-1")



35/2 Bedroom 6 Berth
Body Length - 10.86m (35'-7 3/4")
Body Width - 3.69m (12'-1")



35/3 Bedroom 8 Berth
Body Length - 10.86m (35'-7 3/4")
Body Width - 3.69m (12'-1")

Options for:

- Domestic style central heating system including combi boiler (not available in 23/1 and 26/2 models)
- Double glazed PVCu exterior door(s) and windows, featuring night ventilation position
- Extra insulation
- Atlas intelligent electric heating system
- Fridge or fridge/freezer

Atlas reserves the right to change any materials, fittings etc., shown in this brochure at any time and without prior notice as supply or product development demand. All Atlas Caravan Holiday Homes are built to comply with all relevant British Standards and Codes of Practice as required by the National Caravan Council certification scheme. NOTE: Caravan Holiday Homes are not designed for residential occupancy. "To use an Atlas Caravan Holiday Home, it will need to be correctly sited, have steps or other means of entry and be connected to services (an appropriate propane gas supply, mains electricity to suit the required power offtake, mains water at a pressure to suit the appliances and a waste water/sewage outlet)". Due to the nature of our construction methods and practices, it may not always be possible to match patterns precisely on some wallboards and fabrics. Any Park Operator, anywhere in the UK, can purchase an Atlas Holiday Home for you through the Atlas Dealer/Park Distribution network.

Atlas Caravan Company Ltd.

Wiltshire Road, Hull HU4 6PD.

Telephone No. 01482 562101. Fax No. 01482 566033.

www.atlas-caravans.co.uk

